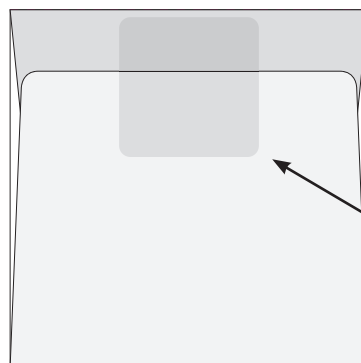
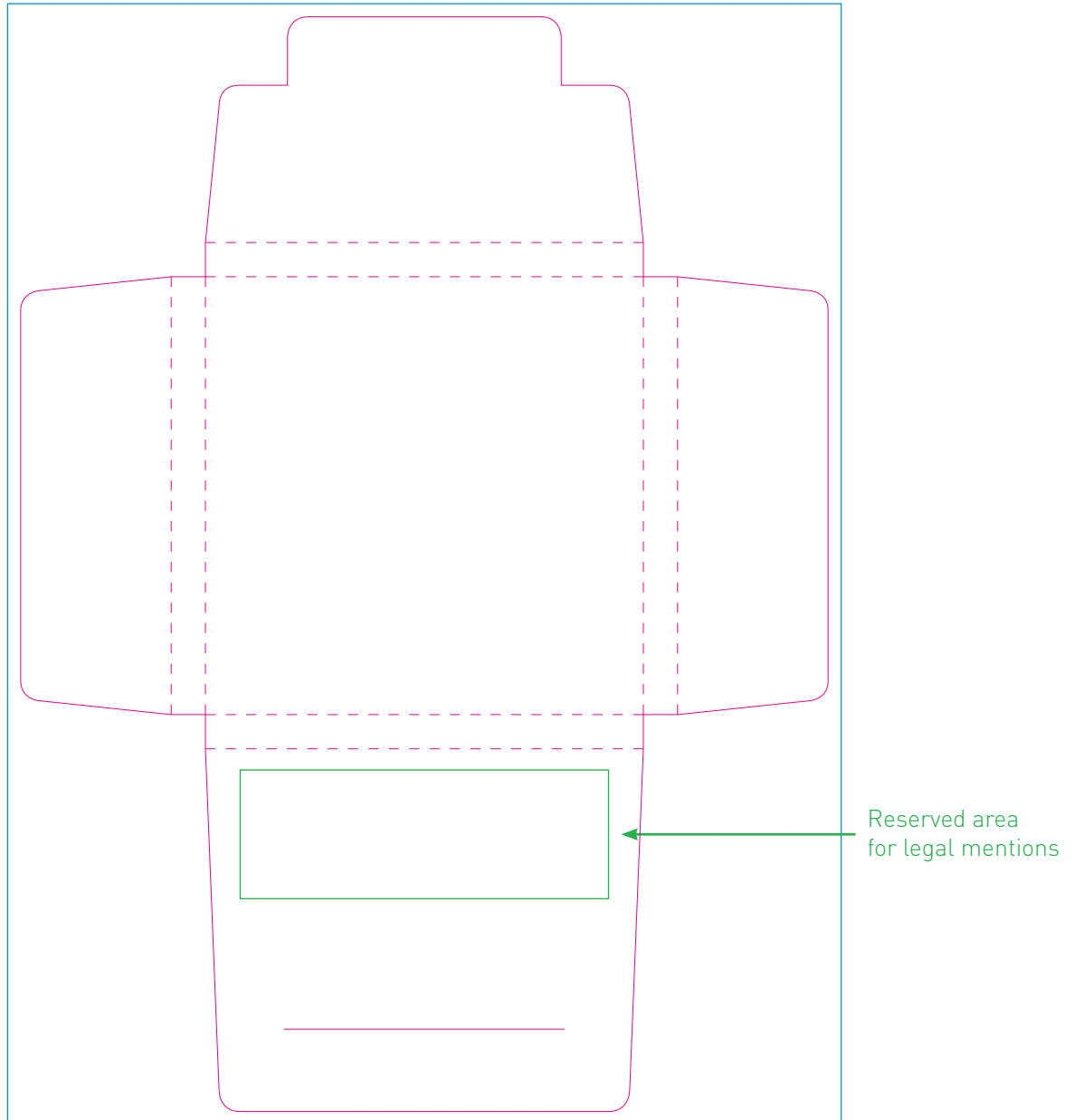


# Template 64UNOPLUS

Size of closed pouch : 64x64 mm / 5 mm tickness  
Content: 1 condom

- Bleed size: 122x164 mm
- Cutting size: 118x160 mm



**Back view of closed pouch**  
The cover is sealed automatically  
by a transparent sticker

# Technical sheet 64UNOPLUS

## Delivery file

We are working on an Adobe CS 5.5 base.  
The following file types are accepted: pdf, eps, ai, jpg, psd.

## Cutting format

Size of your file at the real size of the pouch + 2 mm bleed all around the pouch,  
122x164 mm.

## Prepress

- Images 300 dpi in CMYK mode.
- No use of spot colors unless special offer.
- We prefer to receive a file without displaying the template and cut lines.
- Be sure to provide us with all necessary fonts if we have to get into your file.

## Legal mention

The condom is a medical device and is subject to the standards. The 'CE', the address of the condoms's manufacturer, the mention of the content, the warnings, the lot number and expiration date will be included in a visible and legible. All these statements will be printed inside the green zone on the template.

This location may vary according to your creation or as the number of selected languages. A color is accepted in the background.

## Number of languages

The languages of legal information have to be understood by the target group and according to the official regulations of the country of distribution. Example: in France, one language is mandatory: French. In Switzerland, there are several official languages, the use of three languages is strongly recommended: French, German and Italian. The surface of the reserved area for legal will be larger.

## Verso or inside pouch

Inside pouch area is reserved for printing of the terms of use (mandatory). The printing is done in one color black excepts special request. This space is customizable, depending on your request. We advise you to put only a title or a very short text, a background is also possible. Please contact us for the available space.